



The strength of networking: the Cities for Climate Protection (CCP) Campaign

International Conference on Climate Change, Bilbao, Spain
24 April 2007

Ilaria De Altin
Coordinator, Climate & Air Team
ICLEI-Local Governments for Sustainability

Energy Efficiency	Sustainable Transportation	Methane Recovery	Renewable Energy	Waste Reduction / Recycling	Urban Greening
-------------------	----------------------------	------------------	------------------	-----------------------------	----------------

Contents



- 'Local to Global': Context for activities
- Introducing ICLEI's CCP Campaign
- European examples
- Interaction and support options
- Conclusion

Energy Efficiency	Sustainable Transportation	Methane Recovery	Renewable Energy	Waste Reduction / Recycling	Urban Greening
-------------------	----------------------------	------------------	------------------	-----------------------------	----------------

'Local to Global'



Cities are part of the challenge and the solution!

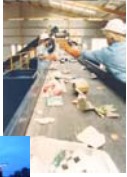
- Scientific agreement on human impact on climate, and need for urgent CO₂ reductions (IPCC Fourth Assessment Report, Feb. 2007)
- Limited timeframe to drastically reduce GHG emissions: 13 years.
- Climate change is non-linear in character, non-action today means serious impact later on.
- We need to respond:
 - Reduce human impact on climate (mitigation)
 - Adapt to inevitable climate change (adaptation)



Action in diverse areas needed



Reduce energy consumption
Use energy efficiency measures
Change to renewable energy (RE)



Sustainable transport: green fleets, good public transport, support for pedestrians and cyclists.

Reduce and recycle waste

ICLEI - Local Governments for Sustainability



- International local government association. 500 members world-wide.
- Founded in 1990 at the UN in New York. Supported by UNEP and United Cities and Local Governments (UCLG).
- Coordinates campaigns and thematic networks:
 - 1992: Local Agenda 21, launched in Rio de Janeiro
 - 1993: Cities for Climate Protection (CCP) Campaign.
- Official Observer status with the the UN Framework Convention on Climate Change (UNFCCC).
- Lead organisation representing local governments at the UNFCCC Conference of the Parties (COP)

www.iclei.org

www.iclei-europe.org

Introducing the CCP Campaign



- Launched in 1993
 - ⇒ A movement: together we are stronger, momentum
 - ⇒ A network: share experiences, learn from one another
 - ⇒ A framework for action: act together, replicate good examples, have comparable results and statistics
- International CCP Campaign:
 - ⇒ More than 800 local authorities from 29 countries, representing about 9% of the world's population.
- European Campaign:
 - ⇒ 160 participants from 16 European countries.



Objective

To develop a worldwide movement of local governments that adopt policies and implement measures, to address climate change mitigation and adaptation to:

- reduce local greenhouse gas emissions (GHGs),
- improve air quality,
- enhance urban liveability (quality of life of inhabitants), and
- improve the resilience of local communities.



Revitalised CCP Europe

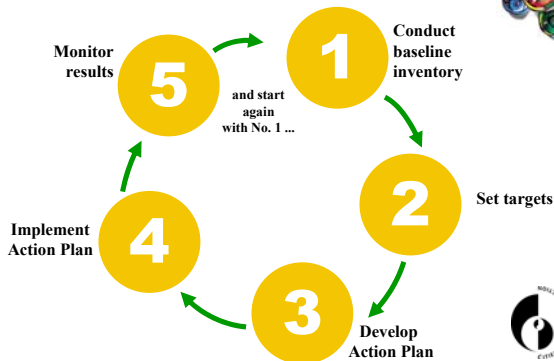
May 2006 launched in Stockholm → To encourage ambitious targets, increase tempo of action, improve network interaction, and involve more local authorities as participants.

Main elements:

- ◇ Encourage political commitment to address climate change.
- ◇ Proposed areas for action:
 - ⇒ sustainable energy
 - ⇒ urban design and land use planning
 - ⇒ sustainable mobility
 - ⇒ water and waste management
- ◇ Local authorities set own targets, and act accordingly.
- ◇ Use the CCP 5-milestones.



Result-oriented: 5 Milestones



Ambitious cities in CCP Europe



City of Heidelberg, Germany

Target: 20% reduction in CO₂ emissions up to the year 2015 (base-line 1987).

Effective involvement of community, business and industry.



Municipality of Växjö, Sweden

Aim: Fossil fuel free municipality, and decrease emissions from fossil fuels by 50% per capita by 2010 (70% by 2025).

Already achieved: 24% CO₂ reduction by 2005 (from 1993).



Woking Borough Council, United Kingdom

Excellent targets: 60% eCO₂ reduction by 2050 and 80% by 2100; and 100% green energy by 2010

Effectively combining mitigation and adaptation measures



City of Heidelberg, Germany



Targets:

- 20% reduction in CO₂ emissions up to the year 2015 (base-line 1987)

Climate Protection Plan Heidelberg 2004

- the City of Heidelberg is one of the first German cities let create a Climate Protection Plan in 1991 and 2004

- main focus on:

- increase of energy efficiency
- use of renewable energies in private households and industries

Project "Efficient Power Application in Businesses"

- since 2000 the City of Heidelberg supports businesses and institutions with efficient use and acquisition of computers- and telecommunication devices

Renewable Energy

- hydropwer
- biomass
- geothermal power
- wind energy
- solar energy

City of Stockholm, Sweden



Targets:

Already achieved: 25% emissions reduction (from 5.3 tonnes per capita in 1990 to 4 tonnes by 2005)

New target: **Carbon zero city by 2050**

Strategies include:

- Centralised district heating - using bio-energy.
- Public transport - subway system runs using RES.
- Congestion charge from 2005. Better air quality.
- Private-Public Partnerships for introducing clean, alternative fuelled vehicles (research, demo, use).
- Introduction of alternative fuels at petrol stations.

www.stockholm.se/climatechange



City of Freiburg, Germany



Targets:

- reduce GHG emissions - 25% below 1992 levels by 2010
- generate 10% electricity from RES by 2010

Municipal energy policy

1986: clean energy provision using RES, as well as energy savings

Fundamental instruments:

- 'Solar Region Freiburg'
- Cooperative wind and solar energy projects
- Low energy districts (e.g. Vauban and Rieselfeld)
- Involvement of the Local Agenda 21 office
- Job creation in the RE industry
- Sustainable transport concept



Kirklees Metropolitan Borough Council, UK



Targets:

- 30% CO₂ reduction by 2025

Energy efficiency

- Plan to reach ALL of the 140.000 households in the council in the next 3 years - high investments to save also in heating

Renewable Energy

- PV energy: Kirklees has 5% of all UK PVs
- investments also in wind energy
- eco Village

Future plans:

- Hydro Power
- Town biomass heat potential - waste wood
- District heating



CCP participation



- Open to local authorities in the EU 27, former NIS states and Mediterranean countries (North Africa, Middle East).

- No participation fee.

- Networking and representation:

- ICLEI, European and international platforms and events.
- ICLEI has Official Observer status with the the UN Framework Convention on Climate Change (UNFCCC).
- Lead organisation representing local governments at the UNFCCC Conference of the Parties (COP). COP13 - Jakarta 2007.

Setting up National CCP Campaigns

- Develop campaigns that addresses national needs, considering the global context.



We also offer



Tools and services:

- Exchange through mailing list and working groups e.g. Adaptation; Changing citizen behaviour; Energy in the built environment, Mobility.
- HEAT (Harmonised Emissions Analysis Tool) - tracking and planning.
- Capacity-building and training through events and on-line modules.
- Best practice compilation

Project cooperation:

- Concept development
- Partner contact and facilitation
- Coordination
- Partner with wide range of expertise on climate / air / energy-related themes (also dissemination, international visibility, event organisation, training and capacity-building).



Participation Opportunities



➤ Sustainable Energy Systems in Advanced Cities (SESAC)

- Study tours
- Innovative large scale integration RE, advanced EE and systems for poly-generation linked with eco-building concepts.
- www.concertoplus.eu/projects/sesac.php
- Concerto project, supported by the EC.



➤ Local Renewables Initiative (LRI)

- Network of cities committed to sustainable energy
- Local Renewables 2007 Conference, Freiburg, 13-15 June
- www.local-renewables.org
- Supported by the German government - BMZ and GTZ.



Participation Opportunities (continued)



➤ Biofuel Cities – A European Partnership

- Platform for wide range of biofuel stakeholders.
- Integrates European research and pilot application of biofuels for vehicles with a focus on application at the local level.
- Local authorities interested or active in biofuels are invited to join!
- <http://www.biofuelcities.eu>
- 6th Framework project, supported by EC.

Biofuel Cities



Conclusion



Cities are part of the challenge and the solution!

- ⇒ Local authorities have to act in both mitigation and adaptation – as owners of buildings and infrastructure, as service providers, as leaders of communities. **Failure to act now, will result in higher costs later!**
- ⇒ There is a limited time-frame in which to act
- ⇒ Aim for cross-party political consensus that climate change is a priority = continuity of action plans.
- ⇒ Develop a short to long-term vision, with clear steps: set ambitious targets.
- ⇒ **Invitation: Join the CCP Campaign.**



Contact



Climate & Air Team
Email: ccp@iclei-europe.org
Web: www.iclei-europe.org/ccp



Energy Efficiency	Sustainable Transportation	Methane Recovery	Renewable Energy	Waste Reduction / Recycling	Urban Greening
-------------------	----------------------------	------------------	------------------	-----------------------------	----------------
